

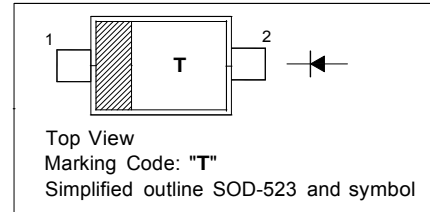
BAND SWITCHING DIODE

Applications

- Low loss band switching in VHF television tuners
- Surface mount band-switching circuits

PINNING

| PIN | DESCRIPTION |
|-----|-------------|
| 1 | Cathode |
| 2 | Anode |

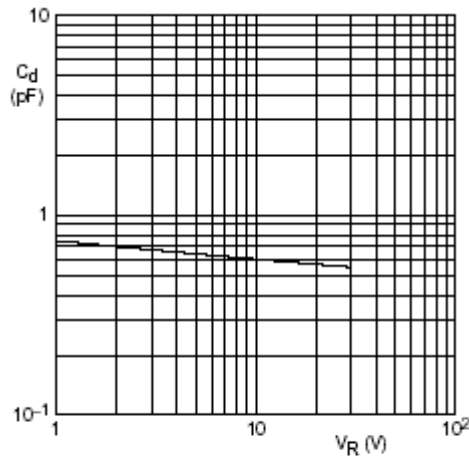


Absolute Maximum Ratings ($T_a = 25\text{ }^\circ\text{C}$)

| Parameter | Symbol | Value | Unit |
|--|-----------|---------------|------------------|
| Reverse Voltage | V_R | 35 | V |
| Continuous Forward Current | I_F | 100 | mA |
| Power Dissipation ($T_S = 90\text{ }^\circ\text{C}$) | P_{tot} | 715 | mW |
| Junction Temperature | T_J | - 65 to + 150 | $^\circ\text{C}$ |
| Storage Temperature Range | T_{stg} | - 65 to + 150 | $^\circ\text{C}$ |

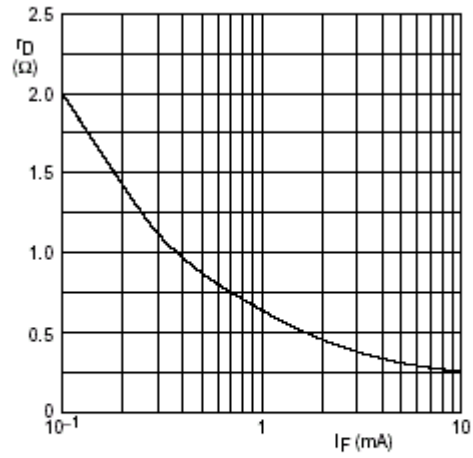
Characteristics at $T_a = 25\text{ }^\circ\text{C}$

| Parameter | Symbol | Max. | Unit |
|---|--------|------|----------|
| Forward Voltage at $I_F = 10\text{ mA}$ | V_F | 1 | V |
| Reverse Current at $V_R = 25\text{ V}$ | I_R | 50 | nA |
| Diode Forward Resistance at $I_F = 2\text{ mA}$, $f = 100\text{ MHz}$ | r_D | 0.7 | Ω |
| Capacitance at $f = 1\text{ MHz}$, $V_R = 6\text{ V}$ | C_d | 1.2 | pF |



$f = 1 \text{ MHz}; T_j = 25 \text{ }^\circ\text{C}.$

Fig.1 Diode capacitance as a function of reverse voltage; typical values.



$f = 100 \text{ MHz}; T_j = 25 \text{ }^\circ\text{C}.$

Fig.2 Diode forward resistance as a function of forward current; typical values.



CHINA BASE
INTERNATIONAL

SOD-523

1SV277WT

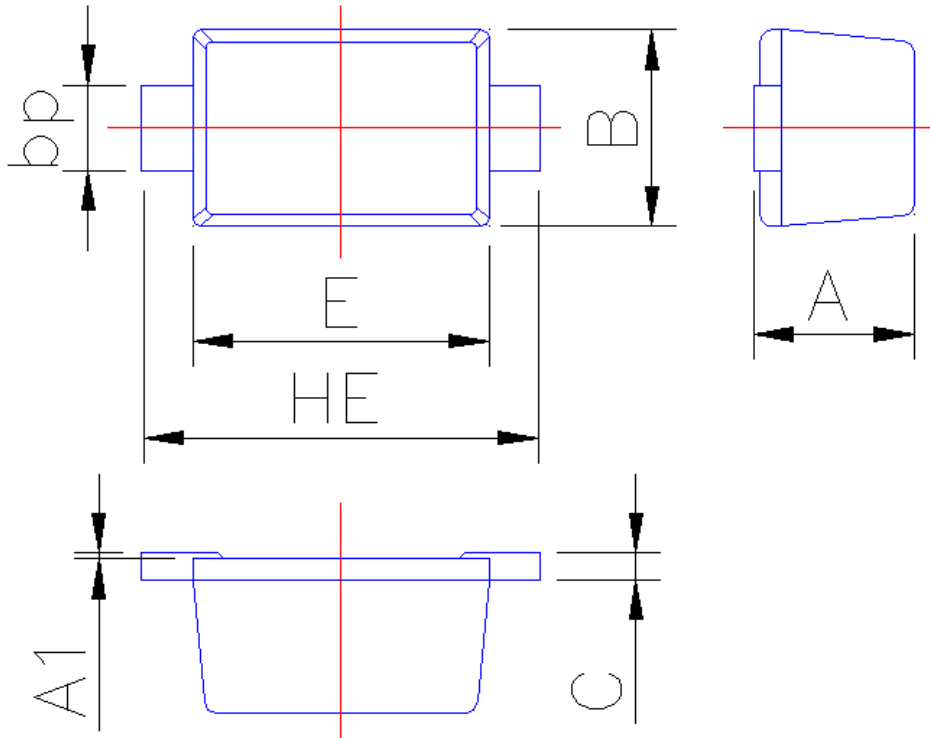


www.china-base.com.hk

PACKAGE OUTLINE

Plastic surface mounted package; 2 leads

SOD-523



| Symbol | Dimension in Millimeters | |
|--------|--------------------------|------|
| | Min | Max |
| A | 0.60 | 0.70 |
| A1 | 0 | 0.05 |
| B | 0.75 | 0.85 |
| bp | 0.25 | 0.40 |
| C | 0.09 | 0.15 |
| E | 1.15 | 1.25 |
| HE | 1.50 | 1.70 |